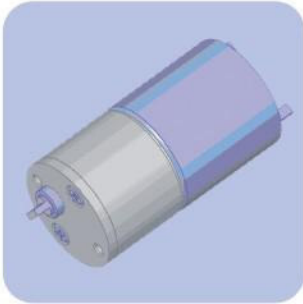


# 齿轮减速电机 DC GEAR MOTOR

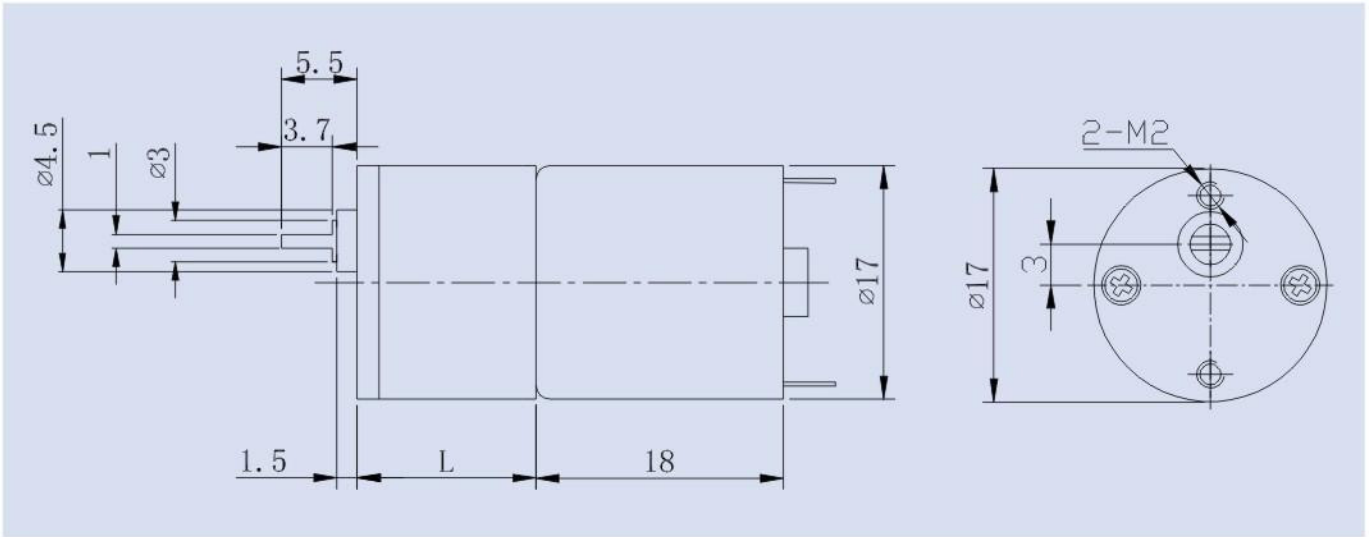
典型应用 Typical Applications  
※电动牙刷

减速比 Reduction Ratio	37	105	296
齿轮箱长度 L	14	15.5	17

齿轮减速电机

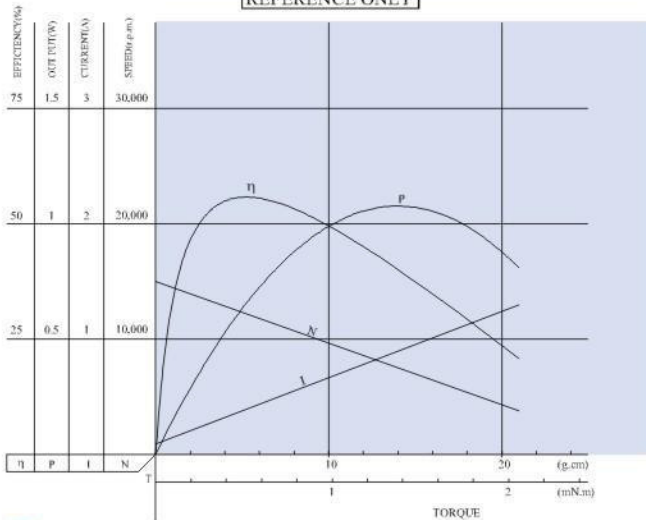


型号 MODEL	电压 VOLTAGE	空载 NO LOAD		负载 AT MAXIMUM EFFICIENCY				堵转 STALL			
		转速 SPEED	电流 CURRENT	转速 SPEED	电流 CURRENT	转矩 TORQUE	功率 OUTPUT	转矩 TORQUE	电流 CURRENT		
	V	r/min	A	r/min	A	mN·m	Kg·cm	W	mN·m	Kg·cm	A
17B020-37	3.0	400	0.15	308	0.37	9.8	0.1	3.16	42	0.43	1.7



020CH-15110

REFERENCE ONLY



17B020-37-03400

REFERENCE ONLY

